

Supplementary Appendix

This appendix has been provided by the authors to give readers additional information about their work.

Supplement to: Temel JS, Greer JA, Muzikansky A, et al. Early palliative care for patients with metastatic non-small-cell lung cancer. *N Engl J Med* 2010;363:733-42.

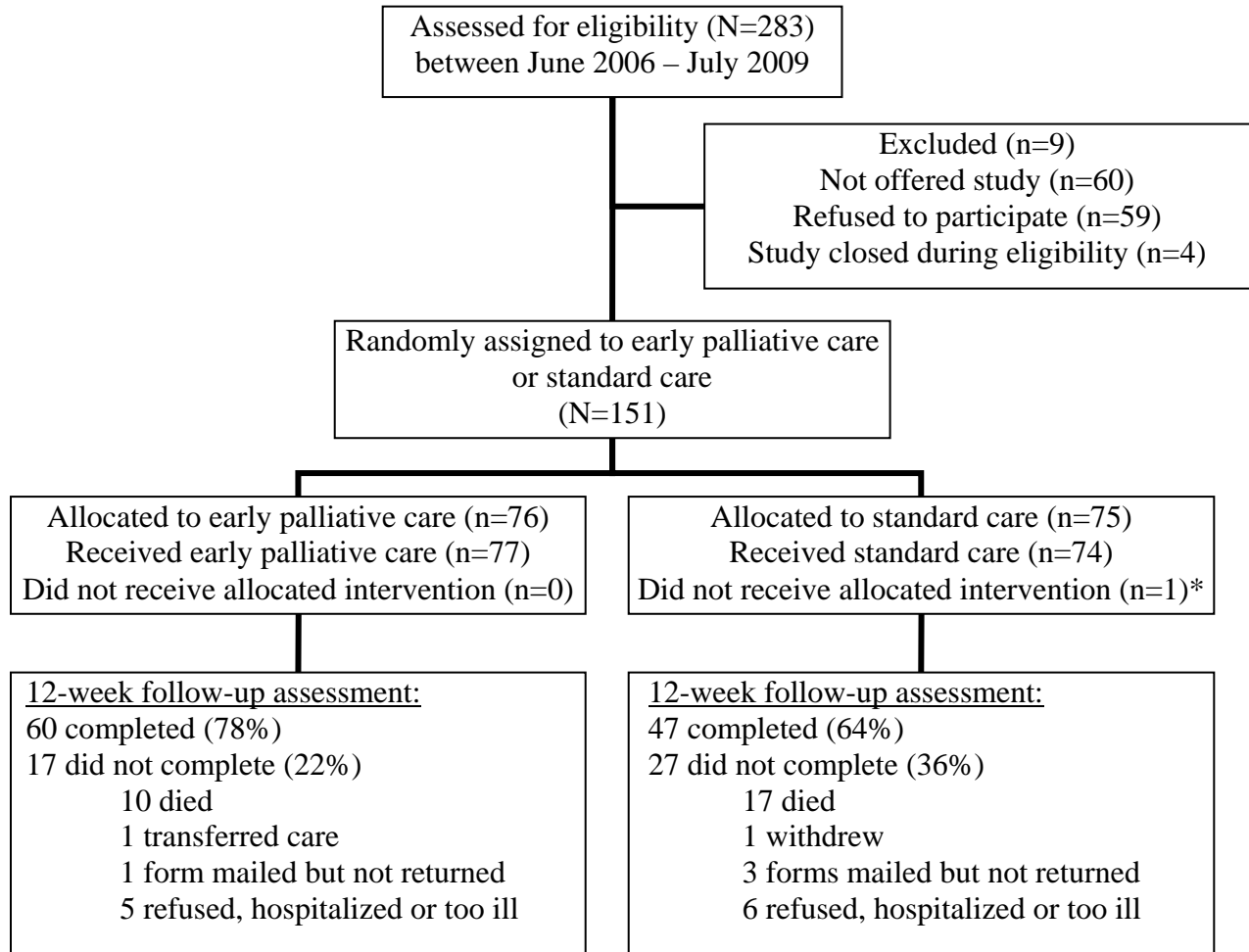
Supplemental Table 1: Ambulatory Palliative Care Guidelines

<p>Illness understanding/education</p> <ul style="list-style-type: none">Inquire about illness and prognostic understandingOffer clarification of treatment goals
<p>Symptom management – Inquire about uncontrolled symptoms with a focus on:</p> <ul style="list-style-type: none">PainPulmonary symptoms (cough, dyspnea)Fatigue and sleep disturbanceMood (depression and anxiety)Gastrointestinal (anorexia and weight loss, nausea and vomiting, constipation)
<p>Decision-making</p> <ul style="list-style-type: none">Inquire about mode of decision-makingAssist with treatment decision-making, if necessary
<p>Coping with life threatening illness</p> <ul style="list-style-type: none">PatientFamily/family caregivers
<p>Referrals/Prescriptions</p> <ul style="list-style-type: none">Identify care plan for future appointmentsIndicate referrals to other care providersNote new medications prescribed

Supplemental Table 2: Healthcare Utilization Measures

Variable	Standard Care N (%)	Early Palliative Care N (%)
Chemotherapy Administration		
Any chemotherapy within 14 days of death	12/50 (24.0%)	7/40 (17.5%)
Any chemotherapy within 30 days of death	21/50 (42.0%)	13/40 (32.5%)
Hospitalizations		
Any admission(s) from time of enrollment to death	43/56 (76.8%)	36/49 (73.5%)
Any admission(s) within 30 days of death	30/56 (53.6%)	18/49 (36.7%)
Median inpatient days (range) from enrollment to death	7.0 (0-45)	5.0 (0-50)
Emergency Department Visits		
Any ED visit(s) from time of enrollment to death	32/56 (57.1%)	26/49 (53.1%)
Any ED visit(s) within 30 days of death	17/56 (30.4%)	11/49 (22.4%)
Hospice Services		
No admission to hospice	22/56 (39.3%)	15/49 (30.6%)
Admission to hospice \leq 3 days prior to death	5/34 (14.7%)	1/33 (3.0%)
Median days (range) on hospice	4 (0-269)	11 (0-117)
Location of Death		
Home or inpatient hospice	37/53 (69.8%)	41/49 (83.7%)
Hospital/nursing home/rehabilitation facility	16/53 (30.2%)	8/49 (16.3%)

Supplemental Figure: CONSORT Diagram



* One patient randomized to usual care was erroneously assigned to palliative care at the time of randomization and therefore is included in the early palliative care study arm.