

## Supplementary Appendix

This appendix has been provided by the authors to give readers additional information about their work.

Supplement to: Griffiths CEM, Strober BE, van de Kerkhof P, et al. Comparison of ustekinumab and etanercept for moderate-to-severe psoriasis. *N Engl J Med* 2010;362:118-28.

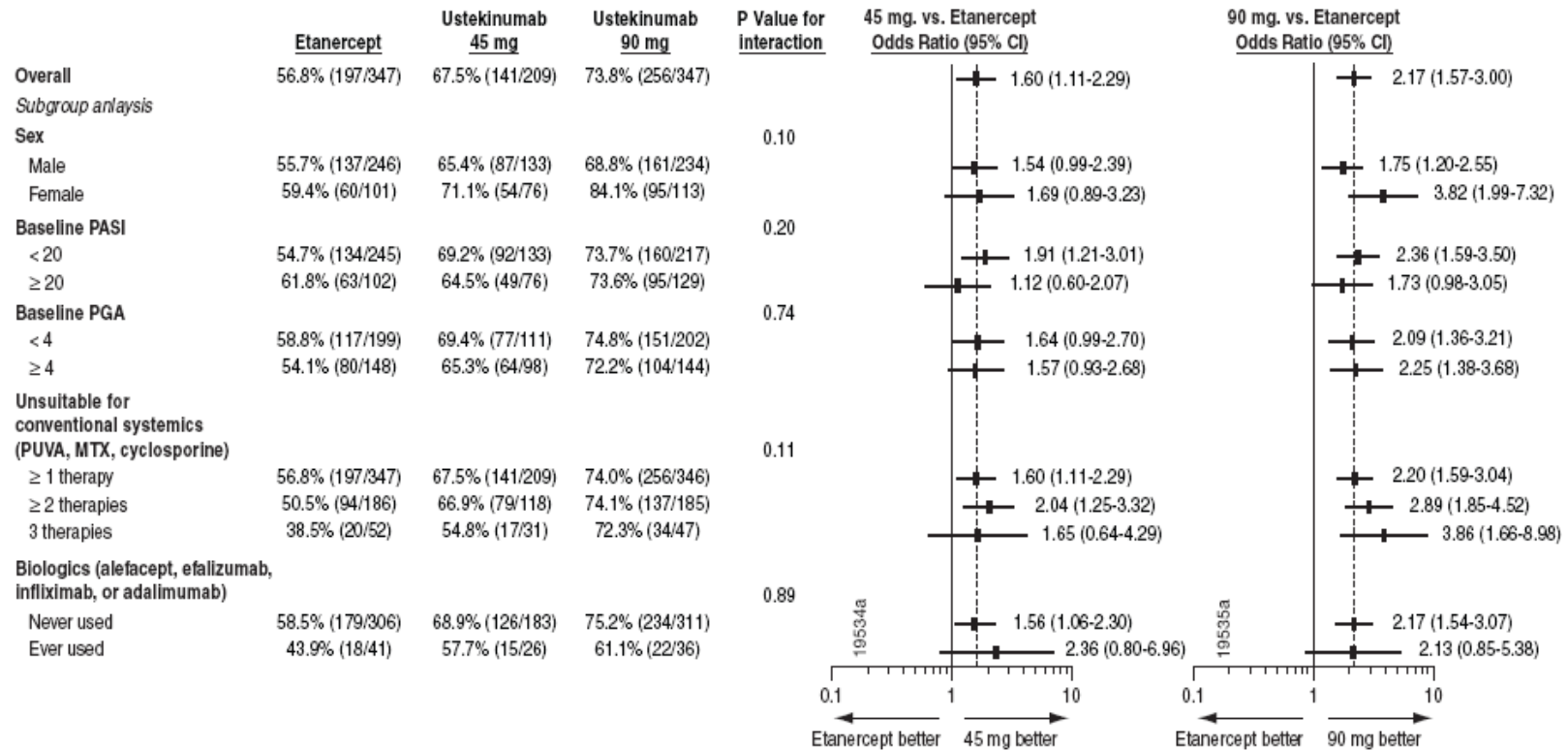
(PDF updated January 22, 2010.)

### *Supplementary Appendix*

The authors also wish to thank the other members of the ACCEPT study group: **L. Albrecht**, Guilford Dermatology Specialists, Surrey, Canada; **M. Augustin**, Universitäts-Klinikum Hamburg Eppendorf, Hamburg, Germany; **D. Baker**, Allergy, Asthma, and Dermatology Research, Lake Oswego, OR; **J. Barker**, St. John's Institute of Dermatology, London, UK; **F. Behringer**, Renstar Medical Research, Ocala, FL; **M. Bourcier**, Dermatology Clinic, Moncton, Canada; **W. Carey**, Royal Victoria Hospital, Montreal, Canada; **M. de Rie**, Academisch Medisch Centrum Universiteit van Amsterdam, Amsterdam, Netherlands; **J. de Weert**, Universitair Ziekenhuis, Gent, Belgium; **B. Elewski**, UAB Department of Dermatology, Birmingham, AL; **S. Fretzin**, Dawes/Fretzin Dermatology Group Inc., Indianapolis, IN; **P. Fritsch**, Univ.-Klinik für Dermatologie und Venerologie, Innsbruck, Austria; **P. Ghislain**, Dermatology Department, Bruxelles, Belgium; **R. Gniadecki**, Bispebjerg Hospital, Copenhagen NV, Denmark; **B. Goffe**, Dermatology Associates of Seattle, Seattle, WA; **K. Gordon**, Division of Dermatology, Skokie, IL; **A. Gottlieb**, Tufts-NEMC, Boston, MA; **D. Gratton**, International Dermatology Research, Inc., Montreal, Canada; **L. Guenther**, Guenther Dermatology Research Centre, London, Canada; **W. Gulliver**, New Lab Clinical Research, Inc., St. John's, Canada; **T. Hamilton**, Atlanta Dermatology, Vein & Research Center, L.L.C., Alpharetta, GA; **E. Healy**, Mailpoint 825, Dermatopharmacology, Southampton, UK; **R. Kaufmann**, Zentrum der Dermatologie, Frankfurt, Germany; **S. Kempers**, Minnesota Clinical Study Center, Fridley, MN; **H. Kerl**, Univ.-Klinik für Dermatologie und Venerologie, Graz, Austria; **A. Kimball**, Brigham and Women's Hospital, Boston, MA; **N. Korman**, University Hospitals of Cleveland Department of Dermatology, Cleveland, OH; **L. Koulu**, TYKS Turun yliopistollinen keskussairaala, Turku, Finland; **K. Kragballe**, Marselisborg Hospital, Århus, Denmark; **G. Krueger**, University of Utah Health,

Department of Dermatology, 4B454 School of Medicine, Salt Lake City, UT; **J. Krueger**, The Rockefeller University, New York, NY; **R. Kunynetz**, Ultranova Skincare, Barrie, Canada; **J. Lambert**, Dermatology Department, Edegem, Belgium; **R. Langley**, Eastern Canada Cutaneous Research Associates Ltd., Halifax, Canada; **M. Lee**, Progressive Clinical Research, San Antonio, TX; **C. Leonardi**, Central Dermatology, Saint Louis, MO; **M. Ling**, Medaphase Inc., Newnan, GA; **C. Maari**, Innovaderm Research Laval Inc., Laval, Canada; **M. Magliocco**, UMDNJ Robert Wood Johnson University, New Brunswick, NJ; **R. Matheson**, Oregon Med. Research Center, PC, Portland, OR; **U. Mrowietz**, Universitäts-Klinikum Kiel, Kiel, Germany; **S. Nigen**, Innovaderm Research Inc., Montreal, Canada; **K. Papp**, Papp Clinical Research Inc., Waterloo, Canada; **Y. Poulin**, Centre Dermatologique du Quebec Metropolitain, Ste-Foy, Canada; **E. Prens**, Erasmus Medisch Centrum, Rotterdam, Netherlands; **A. Ranki**, HYKS Helsingin yliopistollinen keskussairaala, HUS, Finland; **T. Rantanen**, Päijät-Hämeen keskussairaala, Lahti, Finland; **K. Reich**, SCIderm GmbH, Hamburg, Germany; **L. Rosoph**, North Bay Dermatology Centre, North Bay, Canada; **M. Rustin**, Dermatology, The Royal FREE Hampstead NHS Trust, London, UK; **R. Schopf**, Hautklinik, Mainz, Germany; **T. Smith**, Therapeutics Clinical Research, San Diego, CA; **J. Sobell**, ORA Inc., North Andover, MA; **H. Sofen**, Dermatology Associates, Los Angeles, CA; **J. Sounge**, Mount Sinai School of Medicine, New York, NY; **E. Suys**, Dermatologie Handelskaai 1G, Kortrijk, Belgium; **J. Tan**, Windsor Clinical Research, Windsor, Canada; **D. Toth**, XLR8 Research, Windsor, Canada; **E. Tschen**, Academic Dermatology Associates, Albuquerque, NM; **R. Vender**, Dermatrials Research Division, Hamilton, Canada; **N. Wasel**, Stratica Medical, Edmonton, Canada; and **G. Wozel**, Klinik und Poliklinik für Dermatologie, Dresden, Germany.

**Supplementary Figure 1.** Summary of PASI 75 response at Week 12 across selected baseline characteristics. Tests for interaction were based on a logistic model with PASI 75 response at week 12 as the dependent variable, treatment group and a baseline characteristic as the main effects, and baseline weight (<90 kg, >= 90kg) as a stratification factor. Continuous variables were used whenever possible. Patients considered unsuitable for conventional systemic agents included those who had an inadequate response, intolerance, or contraindication to previous treatment with psoralen plus ultraviolet light A (PUVA), methotrexate (MTX), or cyclosporine.



**Supplementary Table 1 Adverse events and other key safety data through week 64**

	Comparator phase (week 0-12)			Etanercept with crossover to ustekinumab 90 mg		Episodic treatment with ustekinumab	
	Etanercept	Ustekinumab		Before	After		
	50 mg (n=347)	45 mg (n=209)	90 mg (n=347)	crossover (n=347)	crossover (n=295)	45 mg (n=209)	90 mg (n=347)
Common adverse events - no. of patients (%) <sup>a</sup>							
- Nasopharyngitis	30 (8.6)	21 (10.0)	34 (9.8)	52 (15.0)	38 (12.9)	50 (23.9)	84 (24.2)
- Upper respiratory tract infection	20 (5.8)	13 (6.2)	22 (6.3)	39 (11.2)	35 (11.9)	37 (17.7)	71 (20.5)
- Headache	38 (11.0)	31 (14.8)	42 (12.1)	41 (11.8)	9 (3.1)	35 (16.7)	55 (15.9)
- Back pain	7 (2.0)	14 (6.7)	15 (4.3)	9 (2.6)	3 (1.0)	17 (8.1)	36 (10.4)
- Fatigue	13 (3.7)	8 (3.8)	19 (5.5)	13 (3.7)	1 (0.3)	12 (5.7)	26 (7.5)
- Arthralgia	8 (2.3)	11 (5.3)	10 (2.9)	12 (3.5)	7 (2.4)	18 (8.6)	25 (7.2)
- Cough	11 (3.2)	3 (1.4)	14 (4.0)	14 (4.0)	8 (2.7)	6 (2.9)	25 (7.2)
- Diarrhea	9 (2.6)	8 (3.8)	9 (2.6)	10 (2.9)	6 (2.0)	10 (4.8)	21 (6.1)

- Pruritus	14 (4.0)	12 (5.7)	16 (4.6)	18 (5.2)	6 (2.0)	14 (6.7)	20 (5.8)
- Bronchitis	2 (0.6)	2 (1.0)	3 (0.9)	5 (1.4)	5 (1.7)	11 (5.3)	19 (5.5)
- Influenza	5 (1.4)	1 (0.5)	4 (1.2)	10 (2.9)	15 (5.1)	10 (4.8)	18 (5.2)
- Injection site reactions	86 (24.8)	9 (4.3)	13 (3.7)	86 (24.8)	5 (1.7)	12 (5.7)	18 (5.2)
- Nausea	8 (2.3)	8 (3.8)	10 (2.9)	10 (2.9)	1 (0.3)	11 (5.3)	17 (4.9)
- Oropharyngeal pain	14 (4.0)	5 (2.4)	14 (4.0)	15 (4.3)	3 (1.0)	14 (6.7)	17 (4.9)
- Sinusitis	3 (0.9)	6 (2.9)	7 (2.0)	4 (1.2)	6 (2.0)	12 (5.7)	16 (4.6)
- Gastroenteritis	3 (0.9)	4 (1.9)	3 (0.9)	4 (1.2)	2 (0.7)	12 (5.7)	11 (3.2)
Serious adverse events							
- no. of patients (%)							
- Gastrointestinal	1 (0.3)	1 (0.5)	2 (0.6)	3 (0.9)	0 (0.0)	3 (1.4)	6 (1.7)
- Infections	1 (0.3)	0 (0.0)	4 (1.2)	3 (0.9)	1 (0.3)	2 (1.0)	10 (2.9)
- Cardiac/Vascular	0 (0.0)	1 (0.5)	1 (0.3)	2 (0.6)	3 (1.0)	3 (1.4)	4 (1.2)
- Metabolism and nutrition	0 (0.0)	0 (0.0)	0 (0.0)	0 (0.0)	0 (0.0)	1 (0.5)	2 (0.6)
- Renal and urinary	1 (0.3)	0 (0.0)	1 (0.3)	1 (0.3)	0 (0.0)	0 (0.0)	3 (0.9)
- Respiratory	0 (0.0)	0 (0.0)	0 (0.0)	0 (0.0)	0 (0.0)	0 (0.0)	3 (0.9)
- Musculoskeletal	1 (0.3)	0 (0.0)	0 (0.0)	1 (0.3)	2 (0.7)	1 (0.5)	1 (0.3)
- Nervous system	0 (0.0)	0 (0.0)	0 (0.0)	0 (0.0)	1 (0.3)	0 (0.0)	2 (0.6)
- Other <sup>b</sup>	0 (0.0)	2 (1.0)	0 (0.0)	5 (1.4)	6 (2.0)	8 (3.8)	9 (2.6)

Abnormal hematology and chemistry values – no. of patients (%) <sup>c</sup>							
- Neutrophils, absolute (decreased)	3 (0.9%)	0 (0.0%)	1 (0.3%)	4 (1.2%)	0 (0.0%)	1 (0.5%)	1 (0.3%)
- Lymphocytes, absolute (decreased)	0 (0.0%)	0 (0.0%)	0 (0.0%)	2 (0.6%)	0 (0.0%)	3 (1.4%)	4 (1.2%)
- ALT/SGPT (elevated)	4 (1.2%)	1 (0.5%)	3 (0.9%)	5 (1.4%)	1 (0.3%)	2 (1.0%)	5 (1.4%)
- AST/SGOT (elevated)	1 (0.3%)	0 (0.0%)	1 (0.3%)	3 (0.9%)	0 (0.0%)	1 (0.5%)	2 (0.6%)

<sup>a</sup> Common adverse events include those occurring in at least 5% of patients in any treatment group.

<sup>b</sup> Serious adverse events occurred in the following other categories: injuries, pregnancy, surgical and medical procedures, and general, psychiatric, benign neoplasm, endocrine, eye, hepatobiliary, reproductive, and immune system disorders.

<sup>c</sup> Pre-specified abnormal hematology or chemistry values occurring in at least 1% of patients in any treatment group. Other parameters tested included complete blood count, WBC differential, electrolytes, and biochemical tests of hepatic and renal function.