

Supplementary Appendix

This appendix has been provided by the authors to give readers additional information about their work.

Supplement to: James SK, Stenestrand U, Lindbäck J, et al. Long-term safety and efficacy of drug-eluting versus bare-metal stents in Sweden. *N Engl J Med* 2009;360:1933-45.

Online supplement

Table I. Baseline characteristics by year in one stent cohort.

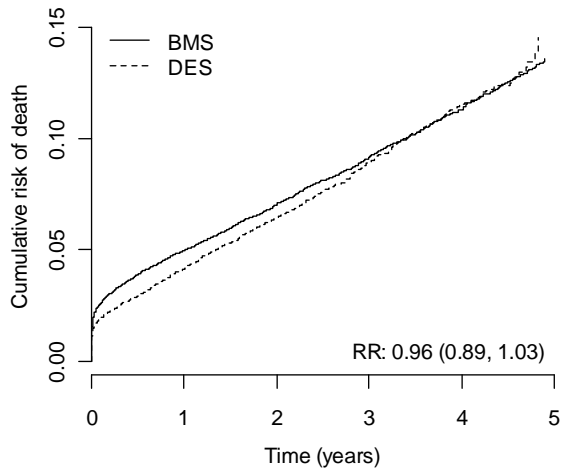
	2003		2004		2005		2006	
	BMS	DES	BMS	DES	BMS	DES	BMS	DES
	N=4882	N=1132	N=4765	N=2334	N=4023	N=3668	N=4989	N=3160
Age: mean (sd)	64.7 (10.8)	63.1 (10.9)	65.7 (10.7)	64.1 (10.7)	66.2 (11.0)	65.2 (10.9)	66.5 (11.2)	65.6 (10.7)
Male gender, %	72.90	69.40	71.80	70.10	72.60	70.70	71.60	70.60
Region, %								
North	12.80	2.0	13.60	2.4	16.30	3.6	15.20	2.2
Stockholm	19.00	18.80	20.20	15.80	18.80	13.70	18.90	11.40
Southeast	12.40	15.00	8.8	13.90	11.20	14.10	13.00	14.10
South	19.10	25.20	15.50	28.10	13.80	26.40	14.70	24.60
Middle	30.90	38.90	23.70	39.60	17.00	37.50	19.30	40.80
West	5.7	0.1	18.20	0.2	22.90	4.7	18.90	7.0
Indication :								
Stable CAD	23.70	32.30	19.90	29.20	16.70	25.40	15.50	23.60
Unstable CAD	54.60	51.90	48.50	50.30	45.80	51.80	45.70	53.40
STEMI	20.80	14.40	31.10	19.50	36.50	21.30	37.10	20.90
Other	1.0	1.3	0.5	1.0	1.0	1.5	1.6	2.1
Smoking :								
Never	35.70	39.20	36.00	40.50	37.60	41.10	40.30	42.80
Former	31.20	31.50	30.40	30.50	29.00	31.50	29.90	34.80
Current	22.00	18.50	21.40	19.80	22.00	20.30	22.50	18.40
Unknown	11.10	10.80	12.20	9.1	11.40	7.1	7.3	3.9
Concurrent disease:-%								
Diabetes	17.30	24.50	16.90	24.30	17.40	23.40	18.00	23.50
Hyperlipidemia: Yes	50.60	61.60	46.30	49.80	45.20	50.00	42.10	50.40
No	42.00	32.40	48.80	44.80	50.80	45.90	55.30	47.50
Unknown	7.5	6.0	4.9	5.4	4.0	4.1	2.7	2.1
Hypertension, Yes	42.80	45.00	43.50	44.40	45.20	46.30	45.10	48.70
No	53.80	51.70	54.00	52.70	51.40	49.90	52.60	49.50
Unknown	3.4	3.4	2.6	2.9	3.4	3.8	2.3	1.8

Heart failure	6.7	8.6	5.9	6.3	6.3	7.1	6.4	6.6
Renal failure	0.9	1.8	1.3	1.6	1.4	1.3	1.4	1.6
Dialysis	0.2	1.0	0.2	0.7	0.4	0.5	0.3	0.5
COPD	5.4	5.6	6.3	5.2	6.3	5.9	7.2	5.7
Dementia	0.1	0.0	0.1	0.1	0.1	0.1	0.1	0.0
Periferal vessel disease	3.2	3.9	3.1	3.5	3.2	3.4	3.1	3.7
Previous disease								
Cancer < 3 years before	2.4	1.9	2.1	2.7	2.7	2.2	2.9	2.7
PCI	12.40	25.50	10.40	14.30	8.3	12.40	7.3	12.80
CABG	10.60	13.20	8.9	9.9	8.1	10.70	7.3	12.00
MI	35.10	40.40	29.00	30.50	23.10	26.90	19.90	25.30
Stroke	5.6	6.0	5.5	5.9	6.2	6.2	6.4	6.6
Medical treatment								
ASA before PCI	83.30	84.30	88.30	90.40	89.50	92.30	91.00	92.70
Clopidogrel before PCI	48.10	48.10	58.10	63.50	67.90	71.20	76.00	74.60
GP IIb/IIIa inhibitors	34.00	30.90	38.30	29.90	41.00	26.00	38.80	22.50
Angio findings, %								
Normal	0.3	0.4	0.3	0.3	0.3	0.4	0.3	0.1
1-vessel	56.60	58.20	56.50	60.00	55.80	55.40	54.30	58.30
2-vessel	23.70	22.00	24.70	21.50	23.90	23.90	25.80	22.40
3-vessel	13.70	13.10	14.80	14.10	14.60	14.20	15.70	14.10
Left main	3.4	3.7	3.6	4.0	3.0	3.9	3.6	4.7
Unknown	2.4	2.6	0.0	0.1	2.3	2.2	0.3	0.3
Complete revasc, %								
No	34.40	31.40	35.70	29.70	35.20	32.50	39.40	32.50
Yes	56.90	56.10	59.60	60.70	63.30	64.90	60.40	67.20
Unknown	8.7	12.50	4.7	9.6	1.5	2.6	0.2	0.3
Stent diameter: mean (sd)	3.1 (0.5)	3.0 (0.4)	3.14 (0.5)	2.9 (0.4)	3.2 (0.5)	2.9 (0.4)	3.2 (0.5)	2.9 (0.5)
Stent length: mean (sd)	15.7 (5.1)	18.5 (6.5)	16.5 (5.3)	18.7 (6.1)	16.9 (5.2)	18.4 (6.0)	16.8 (4.9)	18.8 (6.1)
Treated vessel, %								
RCA	31.90	12.90	35.50	16.40	35.60	20.20	33.60	19.20
LM	1.0	2.4	0.9	2.1	0.6	2.2	0.9	2.5
LAD	41.00	65.60	35.30	60.60	38.30	51.60	40.70	52.40
LCx	22.20	15.60	24.50	17.70	22.10	22.50	22.50	22.20
Graft	3.9	3.4	3.8	3.3	3.4	3.6	2.3	3.7

Stenosis type, %								
DeNovo	98.50	87.40	99.20	96.30	99.40	97.20	99.50	97.20
Restenosis	1.1	4.0	0.4	1.6	0.4	0.9	0.3	0.9
In-stent restenosis	0.4	8.7	0.4	2.1	0.1	1.9	0.2	1.9
Occlusion								
No	79.20	81.90	70.10	77.80	67.80	76.20	68.80	76.30
Yes < 3months	19.00	13.90	28.80	19.80	31.40	21.30	30.70	20.40
Yes >= 3months	1.8	4.2	1.1	2.4	0.7	2.5	0.5	3.3

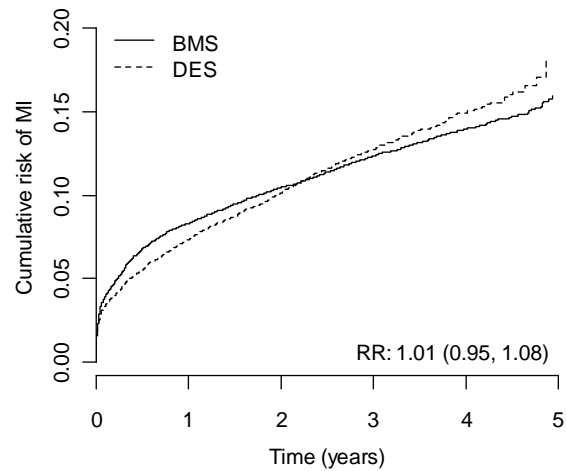
Figure I.

A) Death for patients in the total cohort



BMS	28286	26843	19429	13592	6682	7
DES	19681	18893	12691	6065	1964	0

B) Myocardial infarction for patients in the total cohort



BMS	28286	24832	17636	12149	5956	5
DES	19681	17593	11526	5367	1687	0

Figure II Death or MI in the total cohort of patients treated 2003-2004

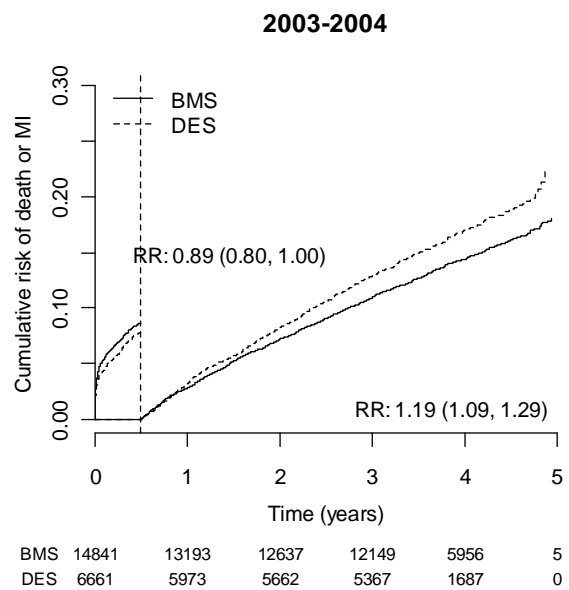
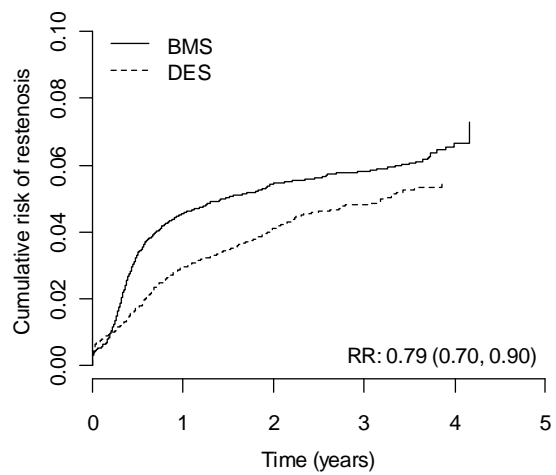


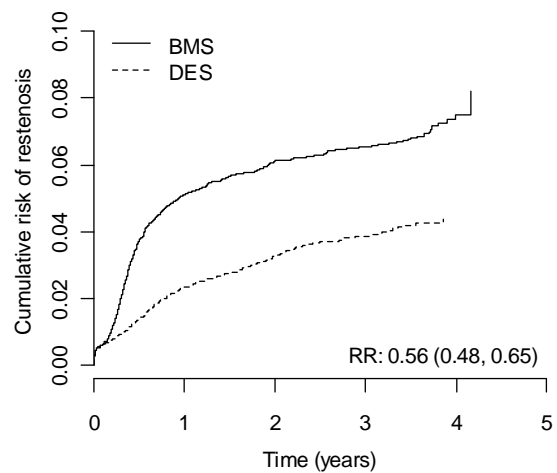
Figure III. Restenosis in patients who received only one stent

A. Unadjusted



BMS	12358	11240	7897	4429	760	0
DES	8648	8080	6377	2721	349	0

B. Adjusted



BMS	12358	11240	7897	4429	760	0
DES	8648	8080	6377	2721	349	0