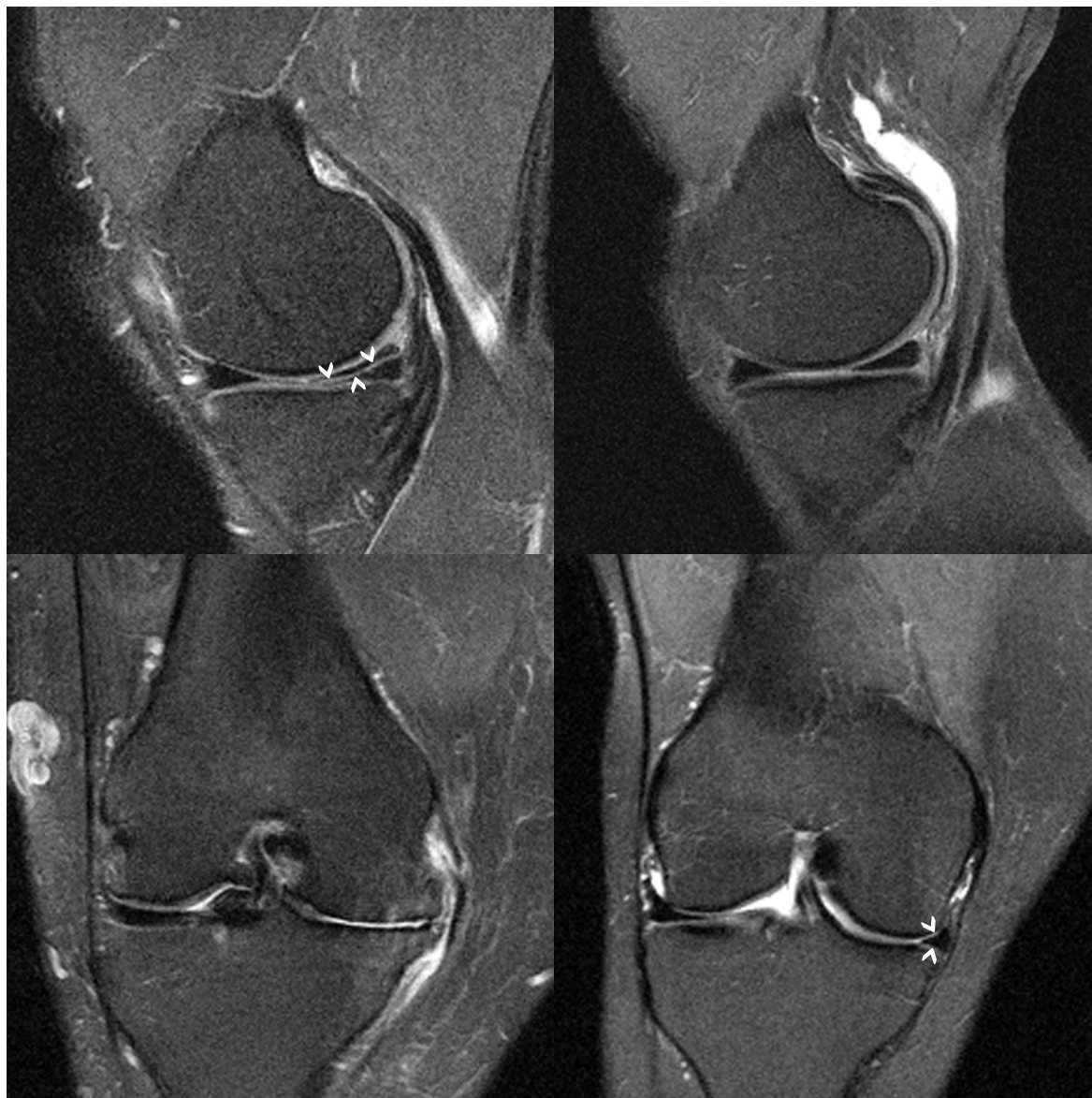


Supplementary Appendix

This appendix has been provided by the authors to give readers additional information about their work.

Supplement to: Englund M, Guermazi A, Gale D, et al. Incidental meniscal findings on knee MRI in middle-aged and elderly persons. *N Engl J Med* 2008;359:1108-15.



Web Appendix Figure 1. Example Images from Knee MRI Showing Meniscal Damage and Normal Meniscal Integrity.

The top left image (sagittal plane) shows a horizontal tear (arrowheads) in the posterior horn of the medial meniscus; the top right hand-hand image illustrates normal meniscal integrity. The bottom left image (coronal plane) shows complete destruction (absence) of the body of the medial meniscus (the subject has severe evidence of knee osteoarthritis); the bottom right-hand image illustrates the normal triangular shape of the meniscus body (arrowheads). All images are 1.5-tesla fat-saturated proton-density scans.

Web Appendix Table 1. Characteristics of the Study Participants According to Right Knee Meniscal Integrity.*

Characteristic	Meniscal Integrity			P Value
	No Damage (N=641)	Tear(s) without Destruction (N=249)	Destruction (N=101)	
Age – yr	60.7±8.0	64.7±8.6	66.4±9.2	<0.001
Women – no. (%)	393 (61)	110 (44)	62 (61)	<0.001
White race – no. (%)	588 (92)	237 (95)	97 (96)	0.09
Body-mass index†	28.1±5.4	28.3±5.4	31.6±6.5	<0.001
Current smoker – no./total no. (%)	79/613 (13)	23/235 (10)	4/98 (4)	0.03
Right Knee – no./total no. (%)				
Any pain, aching, or stiffness in the previous month	136/628 (22)	77/238 (32)	65/99 (66)	<0.001
Pain, aching, or stiffness on most days	103/628 (16)	65/239 (27)	58/99 (59)	<0.001
Any episode of buckling in the previous 3 months	33/628 (5)	18/240 (8)	13/96 (14)	0.008
Radiographic evidence of osteoarthritis‡	31/624 (5)	60/242 (25)	80/97 (82)	<0.001
Symptomatic osteoarthritis§	12/613 (2)	28/233 (12)	50/96 (52)	<0.001
Previous injury¶	70/628 (11)	36/239 (15)	33/99 (33)	<0.001
Previous surgery	13/628 (2)	21/239 (9)	22/99 (22)	<0.001

* Plus-minus values are means ±SD.

† The body-mass index is the weight in kilograms divided by the square of the height in meters. Data for the body-mass index were missing for 8 persons in the no damage group, 3 persons in the tear(s) without destruction group, and 2 persons in the destruction group.

‡ Tibiofemoral osteoarthritis was defined as a grade of 2 or higher on the Kellgren and Lawrence scale.

§ Symptomatic osteoarthritis was defined as knee pain, aching, or stiffness on most days and radiographic evidence of tibiofemoral osteoarthritis as defined by a grade of 2 or higher on the Kellgren and Lawrence scale.

¶ Previous injury was defined as a knee injury leading to a reduced ability to walk for at least 3 days or the use of crutches or a cane.

Web Appendix Table 2. The Prevalence of Right Knee Meniscal Damage According to Radiographic Status of the Right Knee.*

	Kellgren and Lawrence Grade†				P Value (Chi-square test for trend)
	0 (N=749)	1 (N=43)	2 (N=90)	3 and 4 (N=81)	
Meniscal Damage					
Tear(s) without destruction – no. (%)‡	170 (23)	12 (34)	41 (60)	19 (83)	<0.001
Destruction – no. (%)	9 (1)	8 (19)	22 (24)	58 (72)	<0.001
Any damage – no. (%)	179 (24)	20 (47)	63 (70)	77 (95)	<0.001

* The percentages show the proportion of persons with meniscal damage in each Kellgren and Lawrence group. Data for 28 of the 991 subjects in the community-based sample were not available (because of no plain radiographic films obtained).

† Grade 0=no evidence of radiographic osteoarthritis; grade 1=questionable osteophyte with normal joint space; 2=definitive osteophyte(s) with possible joint space narrowing; grade 3=definite joint space narrowing with moderate multiple osteophyte(s) and some sclerosis; grade 4=severe joint space narrowing with cysts, osteophytes, and sclerosis present.

‡ We have excluded the 97 persons with meniscal destruction (and plain radiographic films available) for the calculation of percentages.