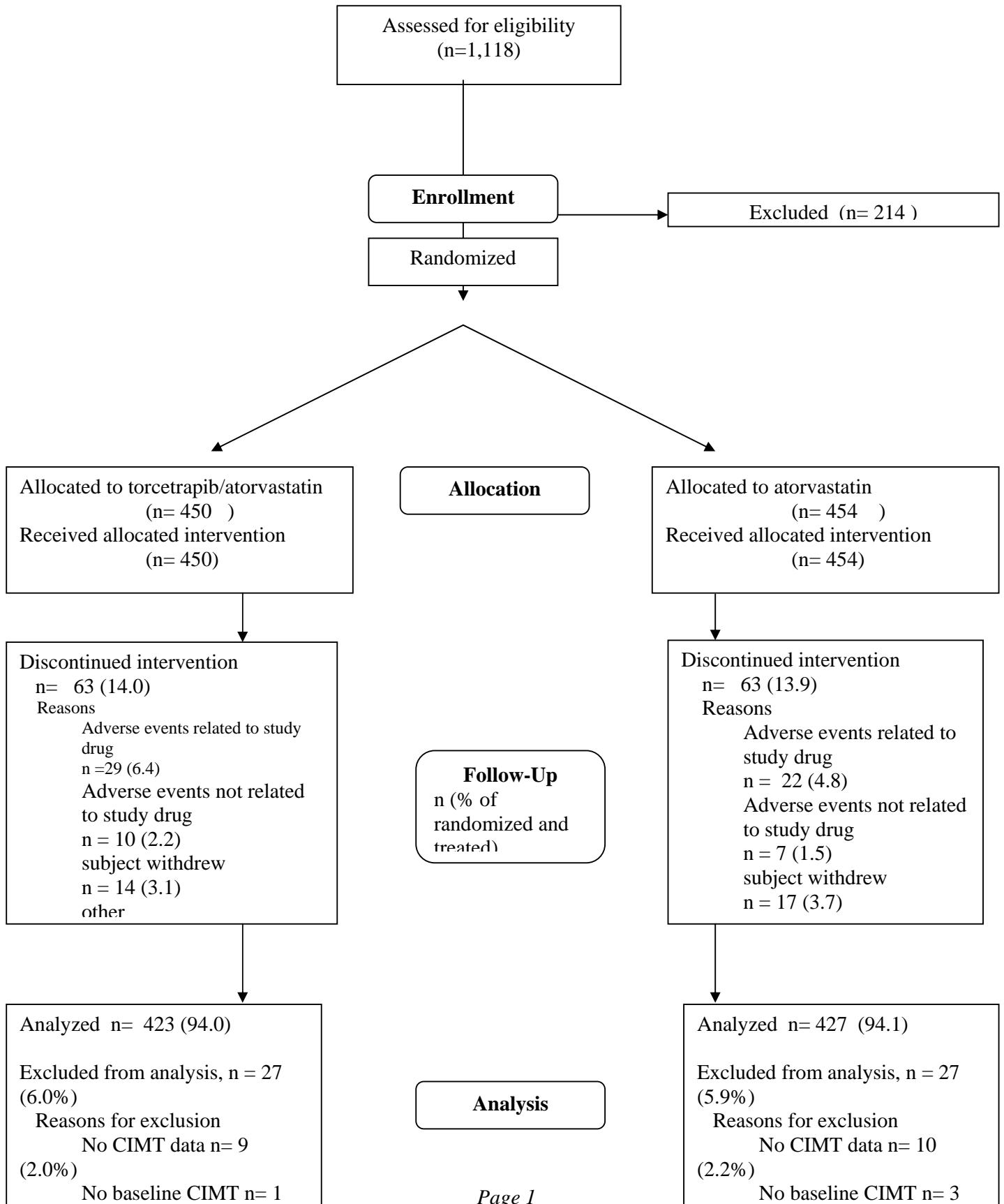


Supplementary Appendix

This appendix has been provided by the authors to give readers additional information about their work.

Supplement to: Kastelein JJP, van Leuven SI, Burgess L, et al. Effect of torcetrapib on carotid atherosclerosis in familial hypercholesterolemia. *N Engl J Med* 2007;356:1620-30.

RADIANCE 1



Appendix 2. Table of adverse events

Treatment-Emergent Adverse Events by System Organ Class (All Causalities)

	T/A	A
	n (%)	n (%)

Number (%) of Subjects:		
Evaluable for adverse events	450	454
With adverse events	386 (85.8)	385 (84.8)
Discontinued due to adverse events	40 (8.9)	27 (5.9)

Number (%) of Subjects with Adverse Events by System Organ Class:		
Blood and lymphatic system disorders	7 (1.6)	6 (1.3)
Cardiac disorders	32 (7.1)	21 (4.6)
Congenital, familial and genetic disorders	0	1 (0.2)
Ear and labyrinth disorders	11 (2.4)	7 (1.5)
Endocrine disorders	0	4 (0.9)
Eye disorders	15 (3.3)	16 (3.5)
Gastrointestinal disorders	131 (29.1)	109 (24.0)
General disorders and administration site conditions	59 (13.1)	57 (12.6)
Hepatobiliary disorders	2 (0.4)	9 (2.0)
Immune system disorders	9 (2.0)	8 (1.8)
Infections and infestations	227 (50.4)	215 (47.4)
Injury, poisoning and procedural complications	60 (13.3)	55 (12.1)
Investigations	49 (10.9)	44 (9.7)
Metabolism and nutrition disorders	14 (3.1)	18 (4.0)
Musculoskeletal and connective tissue disorders	156 (34.7)	145 (31.9)
Neoplasms benign, malignant and unspecified (incl cysts and polyps)	12 (2.7)	14 (3.1)
Nervous system disorders	107 (23.8)	94 (20.7)
Pregnancy, puerperium and perinatal conditions	3 (0.7)	3 (0.7)
Psychiatric disorders	32 (7.1)	26 (5.7)
