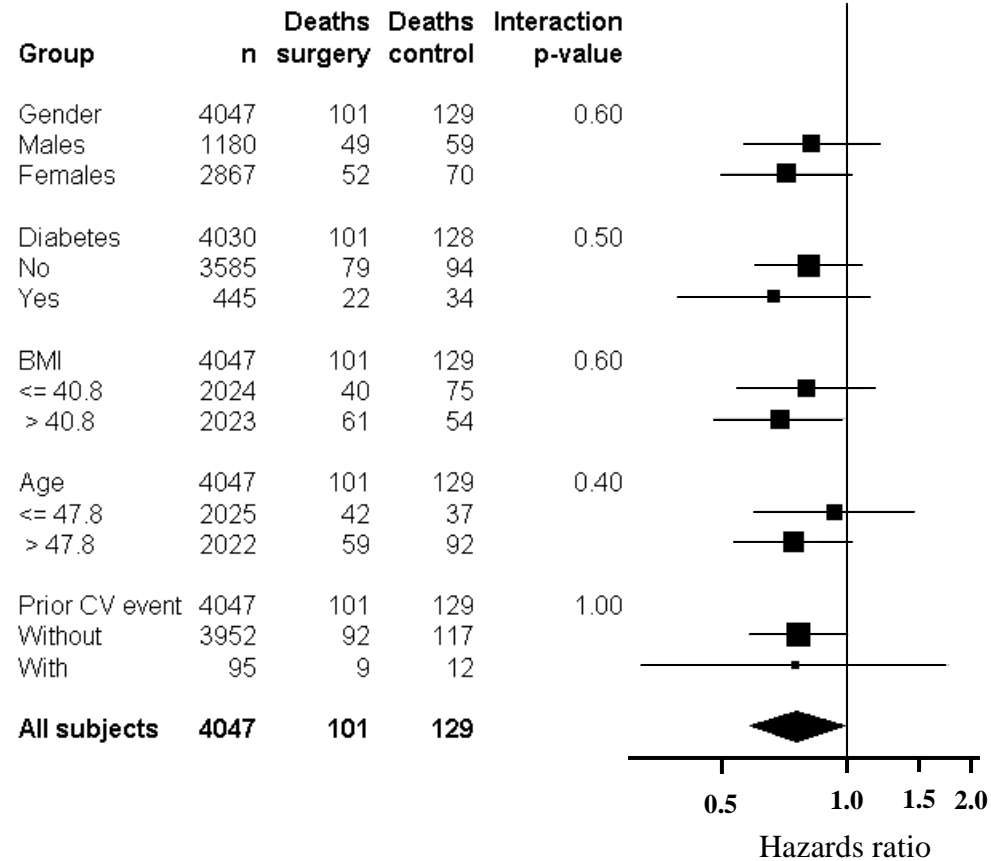


## Supplementary Appendix

This appendix has been provided by the authors to give readers additional information about their work.

Supplement to: Sjöström L, Narbro K, Sjöström CD, et al. Effects of bariatric surgery on mortality in Swedish obese subjects. *N Engl J Med* 2007;357:741-52.

## Online Figure



### Legend: Online Figure

Forest plot of hazard ratios for mortality in several subgroups as defined at inclusion, as well as in all subjects. The squares, denoting hazard ratios, are proportional in size to the number of deaths in a given group; attached lines show 95% confidence intervals. For the line with All subjects, the center of the diamond is the overall hazard ratio, and the ends of the diamond indicate the 95% confidence interval. Hazard ratios less than 1.0 favor surgery over control. The p-value is for a test of no treatment-subgroup interaction.