

Supplementary Appendix

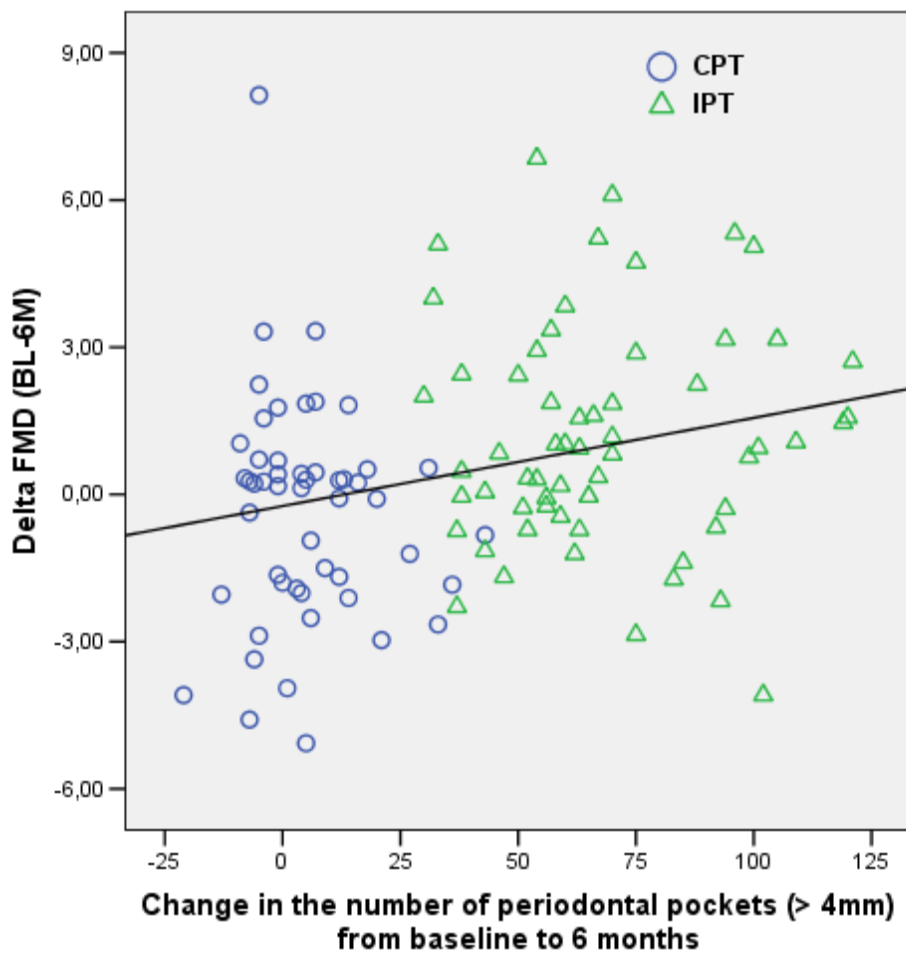
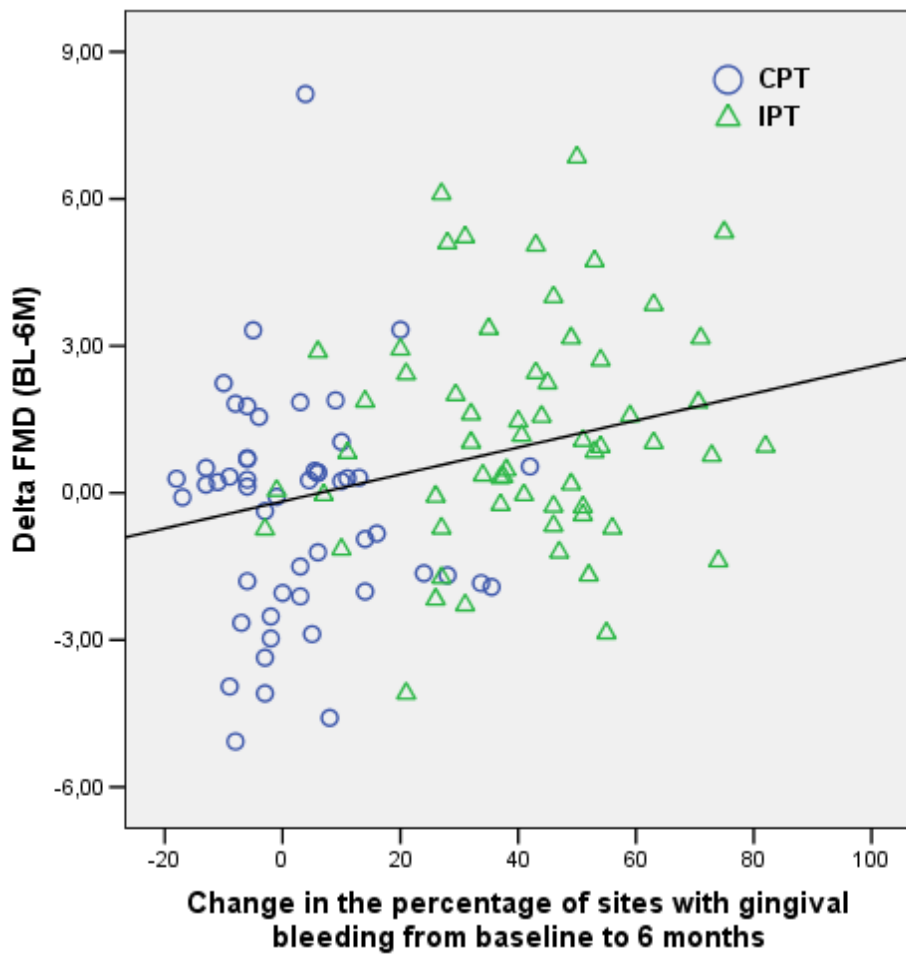
This appendix has been provided by the authors to give readers additional information about their work.

Supplement to: Tonetti MS, D'Aiuto F, Nibali L, et al. Treatment of periodontitis and endothelial function. N Engl J Med 2007;356:911-20.

Supplemental Data

Figure S1

Post-hoc correlation analyses of baseline to 6 month changes in FMD and clinical periodontal parameters. Delta FMD= FMD baseline minus FMD 6 months. Change in the percentage of sites with gingival bleeding from baseline to 6 months = full mouth gingival bleeding scores at baseline minus full mouth gingival bleeding scores at 6 months. Change in the number of periodontal pockets (>4mm) from baseline to 6 months = Number of periodontal pockets at baseline minus number of periodontal pockets at 6 months.



Supplemental Data

Table S1

Frequency of common minor adverse events

Gingival:	Day 1			Day 7		
	CPT	IPT	P value*	CPT	IPT	P value*
swelling (%)	51	100	<0.001	25	81	<0.001
erythema (%)	40	98	<0.001	30	61	0.001
suppuration (%)	2	2	0.735	2	2	0.731
Oral ulcers (%)	-	3	0.265	-	19	<0.001

* Chi square test.

Supplemental Data - Table S2

Difference in the changes in primary and secondary outcomes between study groups at each time point.

	Day 1	<i>P</i> value	Day 7	<i>P</i> value	1 month	<i>P</i> value	2 Months	<i>P</i> value	6 Months	<i>P</i> value
Study End-Points										
Flow mediated dilatation, %	-1.74 (-2.72 to -0.76)	0.001	-0.43 (-1.51 to 0.65)	0.43	-0.25 (-1.30 to 0.80)	0.64	0.86 (0.08 to 1.43)	0.03	1.48 (0.67 to 2.30)	<0.001
GTN-mediated dilatation, %	-3.75 (-6.03 to -1.46)	0.002	-0.57 (-2.84 to 1.70)	0.62	0.50 (-1.42 to 2.43)	0.61	-0.19 (-2.41 to 2.04)	0.87	-0.07 (-2.51 to 2.37)	0.96
CRP, mg/L	14.70 (11.66 to 17.74)	<0.001	2.26 (1.00 to 3.53)	0.001	1.51 (-0.09 to 3.11)	0.06	0.30 (-0.90 to 1.50)	0.63	0.97 (-0.46 to 2.39)	0.18
IL-6, pg/ml	7.82 (6.07 to 9.57)	<0.001	0.52 (-0.59 to 1.63)	0.36	1.97 (-0.13 to 4.07)	0.07	0.26 (-0.34 to 0.86)	0.39	0.37 (-0.34 to 1.07)	0.31
s-Es, ng/ml	1.31 (0.03 to 1.47)	0.02	-0.05 (-0.17 to 0.06)	0.36	-0.10 (-0.21 to 0.01)	0.08	0.10 (0.09 to 0.24)	0.03	0.15 (0.01 to 0.28)	0.02
vWF:AG ng/ml	0.10 (0.03 to 0.18)	0.006	0.03 (-0.04 to 0.11)	0.36	0.05 (-0.03 to 0.12)	0.21	0.04 (-0.03 to 0.11)	0.32	-0.01 (-0.09 to 0.07)	0.72
t-PA ng/ml	-0.58 (-1.58 to 0.42)	0.23							-0.17 (-1.75 to 1.42)	0.84
PAI-1 ng/ml	5.26 (0.26 to 10.27)	0.04							1.63 (-2.81 to 6.07)	0.47
Leucocytes count, 10 ⁹ cells/L	2.05 (1.45 to 2.65)	<0.001	-0.33 (-0.80 to 0.13)	0.16	0.19 (-0.28 to 0.67)	0.42	-0.01 (-0.48 to 0.47)	0.98	0.18 (-0.32 to 0.67)	0.49
Ancillary Variables										
BMI, Kg/m ²							-0.13 (-0.39 to 0.06)	0.17	-0.18 (-0.28 to 0.02)	0.21
Systolic Blood Pressure, mmHg	4.60 (1.07 to 8.13)	0.01	0.54 (-2.65 to 3.73)	0.74	0.72 (-3.97 to 2.53)	0.66	-0.10 (-3.35 to 3.15)	0.95	-1.35 (-4.73 to 2.03)	0.43
Diastolic Blood Pressure, mmHg	2.95 (0.42 to 5.49)	0.02	0.88 (-1.43 to 3.18)	0.45	-0.21 (-2.80 to 2.37)	0.87	-0.82 (-2.95 to 1.30)	0.45	-0.85 (-3.35 to 1.65)	0.50

Vessel diameter, mm	0.04 (-0.03 to 0.12)	0.25	-0.04 (-.12 to 0.05)	0.38	-0.01 (-0.10 to 0.08)	0.83	0.07 (-0.07 to 0.22)	0.31	0.06 (-0.09 to 0.20)	0.46
Reactive hyperemia, ratio	2.74 (0.64 to 4.84)	0.01	0.94 (-.69 to 2.58)	0.26	-0.32 (-2.23 to 1.58)	0.74	-1.19 (-3.36 to 0.97)	0.28	0.61 (-1.34 to 2.55)	0.54
Cholesterol, mmol/L	-0.01 (-0.21 to 0.19)	0.91	-0.20 (-0.40 to 0.00)	0.05	0.05 (-0.16 to 0.27)	0.63	0.01 (-0.24 to 0.26)	0.94	-0.11 (-0.32 to 0.10)	0.32
HDL-Cholesterol, mmol/L	0.08 (0.01 to 0.15)	0.03	-0.12 (-0.21 to -0.04)	0.003	-0.03 (-0.11 to 0.05)	0.45	-0.02 (-0.09 to 0.06)	0.67	0.00 (-0.07 to 0.08)	0.97
LDL-Cholesterol, mmol/L	-0.05 (-0.21 to 0.12)	0.57	-0.07 (-0.24 to 0.11)	0.46	0.09 (-0.10 to 0.27)	0.35	0.11 (-0.07 to 0.29)	0.23	-0.09 (-0.28 to 0.10)	0.35
Glucose, mmol/L	0.17 (-0.02 to 0.37)	0.08	-0.02 (-0.19 to 0.15)	0.84	-0.05 (-0.21 to 0.11)	0.52	-1.74 (-2.72 to -0.76)	0.32	-0.43 (-1.51 to 0.65)	0.52
Triglycerides, mmol/L	-0.25 (-1.30 to 0.80)	0.23	0.58 (-0.28 to 1.43)	0.64	1.48 (0.67 to 2.30)	0.45	-3.75 (-6.03 to -1.46)	0.25	-0.57 (-2.84 to 1.70)	0.87

The reported values refer to differences in the changes between the CPT group (from baseline to reported time point) minus the changes in the IPT group (from baseline to reported time point) (95% CI). Negative values refer to a lower value of the parameter in the IPT group.