

Supplementary Appendix

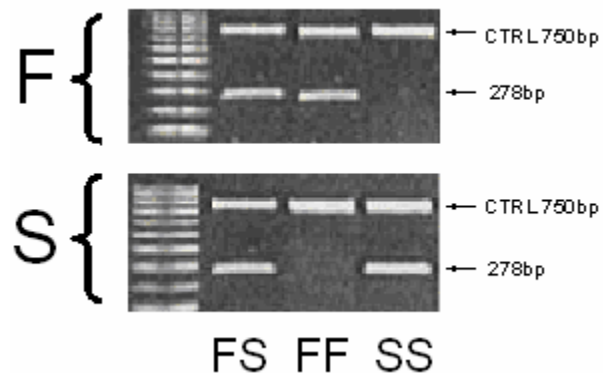
This appendix has been provided by the authors to give readers additional information about their work.

Supplement to: Brown KM, Kondeatis E, Vaughan RW, et al. Influence of donor C3 allotype on late renal-transplantation outcome. *N Engl J Med* 2006;354:2014-23.

Appendix

Figure 1. Each DNA sample underwent two PCR reactions specific for either the F (upper panel) or S (lower panel) allele. Lane 1 contains DNA size markers. Lanes 2-4 show DNA from patients with known F/S allotype. A 278bp fragment indicates a positive result. An internal control (750bp fragment) is visible for every reaction. Lane 2 shows an FS allotype; lane 3 shows an FF allotype, and lane 4 shows an SS allotype.

The shorter 21 base pair primers were validated against the longer (30 base pairs) primers used in previous studies(1). In the samples tested (n=6 for both C3F and C3S) the short and long primers gave identical genotype results. In 5 of the samples used the protein type was known and was correctly predicted by the PCR results.



- (1) Finn JE, Mathieson PW. Molecular analysis of C3 allotypes in patients with nephritic factor. *Clin Exp Immunol* 1993; 91(3):410-414.