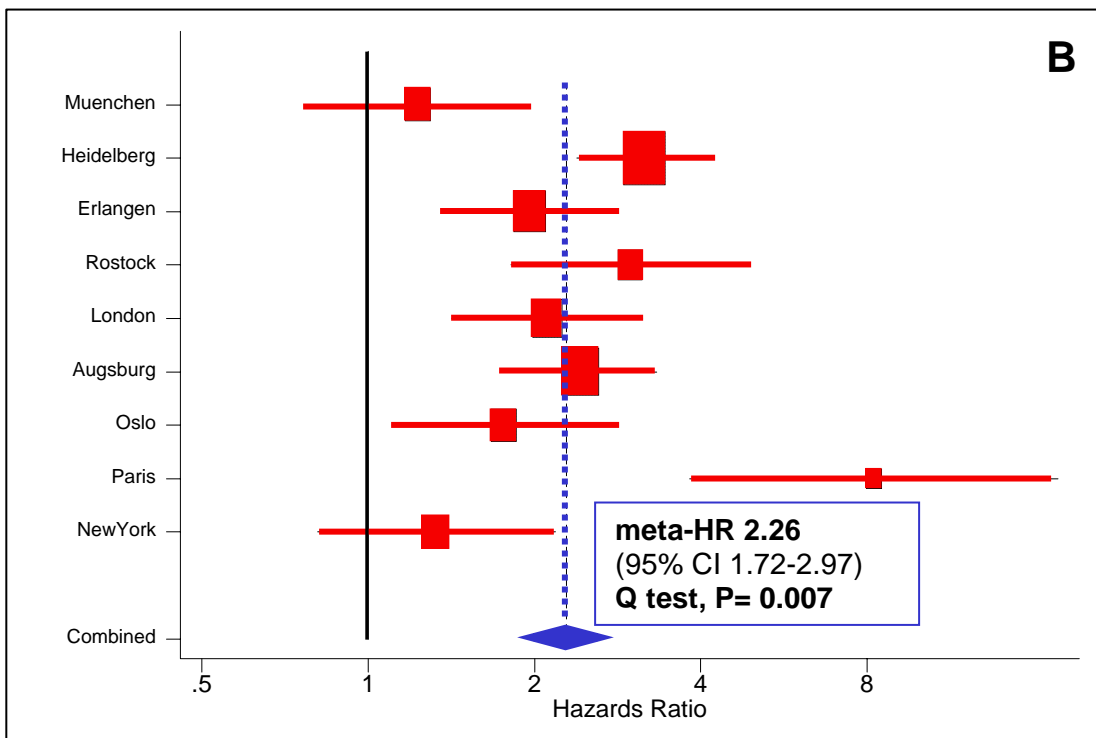
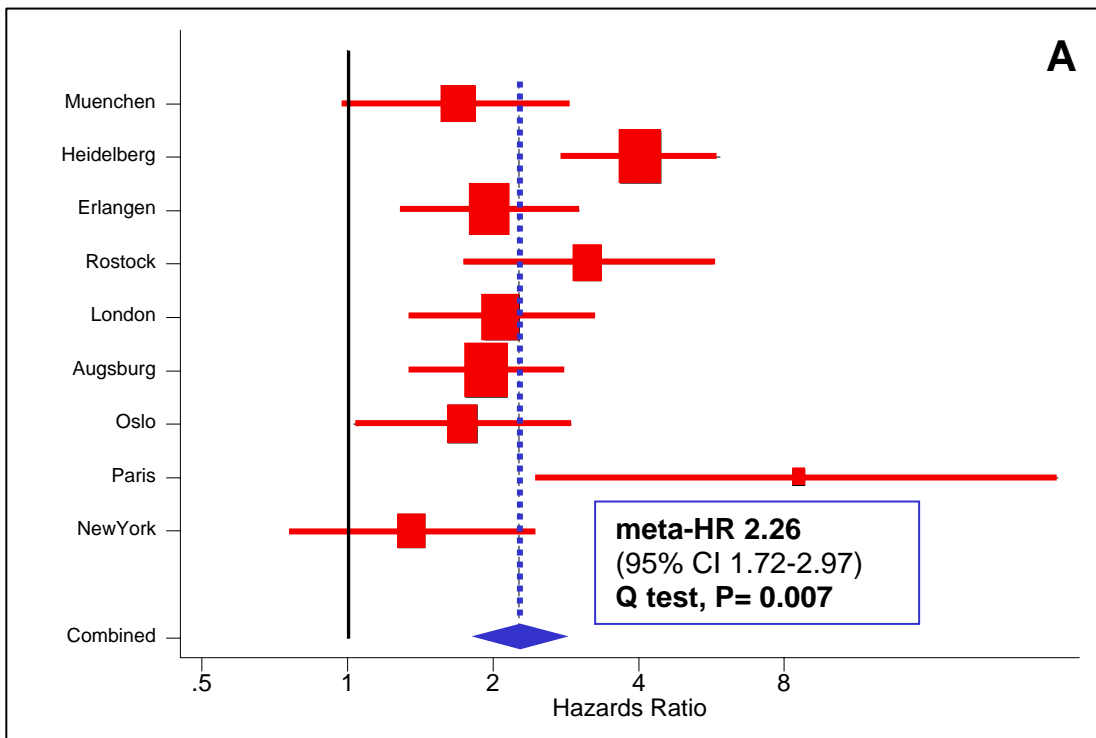


## Supplementary Appendix

This appendix has been provided by the authors to give readers additional information about their work.

Supplement to: Braun S, Vogt FD, Naume B, et al. A pooled analysis of bone marrow micrometastasis in breast cancer. *N Engl J Med* 2005;353:793-802.



**Figure. Meta-analysis**

Random-effects meta-analysis of the effect of bone micrometastasis on overall survival (Panel A) and disease-free survival (Panel B). Data are presented as the hazards ratio for each study (boxes), 95% confidence intervals (horizontal lines) and summary hazards ratio with 95% confidence interval (diamond). The vertical black solid line indicates a hazards ratio of 1.0.

**Table. Sensitivity Analysis**

Center	Meta-analytic Random Effects Model*		
	HR	95% CI	Q Test <sup>†</sup>
<b>Overall Survival</b>			
<i>All centers included</i>	2.26	1.72-2.97	0.007
<i>Muenchen excluded</i>	2.15	1.67-2.77	0.006
<i>Heidelberg excluded</i>	2.02	1.62-2.51	0.180
<i>Erlangen excluded</i>	2.32	1.70-3.17	0.004
<i>Rostock excluded</i>	2.26	1.72-2.97	0.007
<i>London excluded</i>	2.30	1.68-3.15	0.004
<i>Augsburg excluded</i>	2.33	1.70-3.20	0.005
<i>Oslo excluded</i>	2.35	1.74-3.47	0.006
<i>Paris excluded</i>	2.25	1.67-2.77	0.020
<i>NewYork excluded</i>	2.40	1.81-3.17	0.012
<b>Disease-free Survival</b>			
<i>All centers included</i>	2.26	1.72-2.97	<0.001
<i>Muenchen excluded</i>	2.42	1.86-3.17	0.002
<i>Heidelberg excluded</i>	2.14	1.60-2.87	0.001
<i>Erlangen excluded</i>	2.31	1.69-3.16	<0.001
<i>Rostock excluded</i>	2.19	1.63-2.95	<0.001
<i>London excluded</i>	2.30	1.68-3.12	<0.001
<i>Augsburg excluded</i>	2.25	1.63-3.10	<0.001
<i>Oslo excluded</i>	2.33	1.73-3.15	<0.001
<i>Paris excluded</i>	2.07	1.64-2.61	0.007
<i>NewYork excluded</i>	2.40	1.82-3.17	0.001

HR denotes for hazards ratio, CI for confidence interval.

\*For sensitivity (influential) analysis, meta-analytic hazards ratios and confidence intervals were computed omitting one study at a time. Each line indicates meta-analytic hazards ratio and 95% confidence interval excluding the center identified in the first column.

<sup>†</sup>A significant P value (Q test) indicates significant inter-study variation of reported hazards ratios. Similar magnitude of hazards ratio estimates and confidence intervals, however, indicate overall statistical robustness of the meta-analysis.