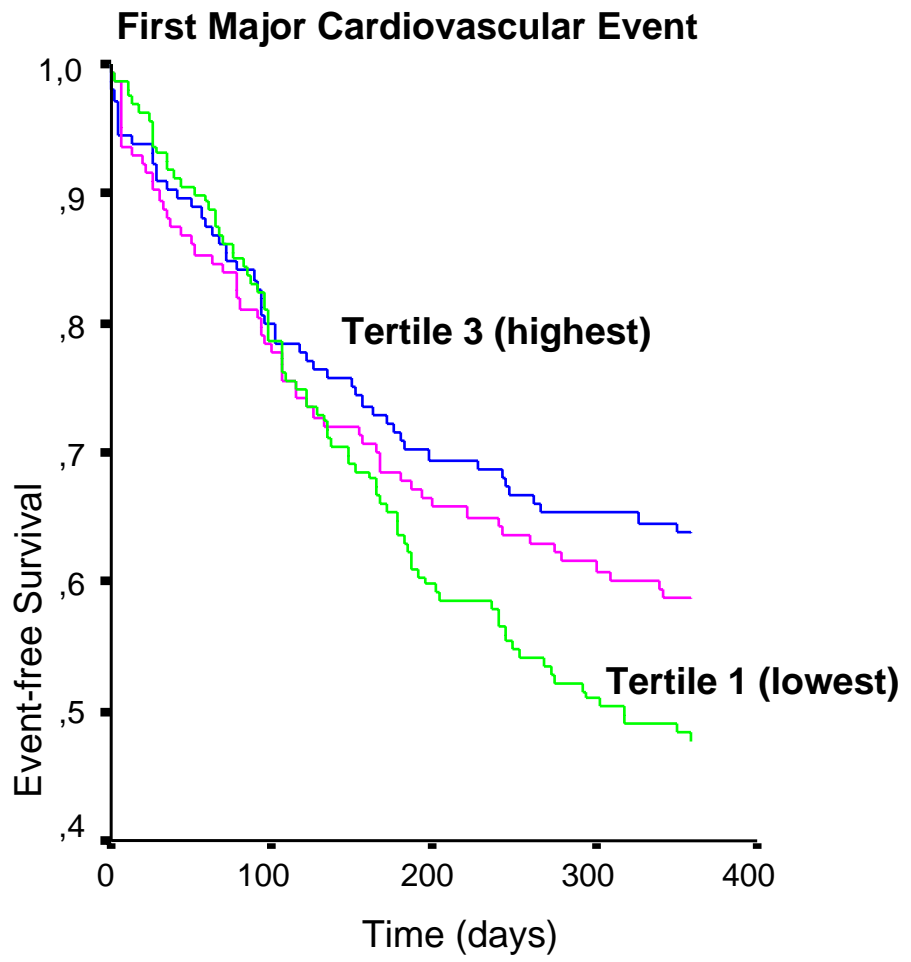


## Supplementary Appendix

This appendix has been provided by the authors to give readers additional information about their work.

Supplement to: Werner N, Kosiol S, Schiegl T, et al. Circulating endothelial progenitor cells and cardiovascular outcomes. *N Engl J Med* 2005;353:999-1007.

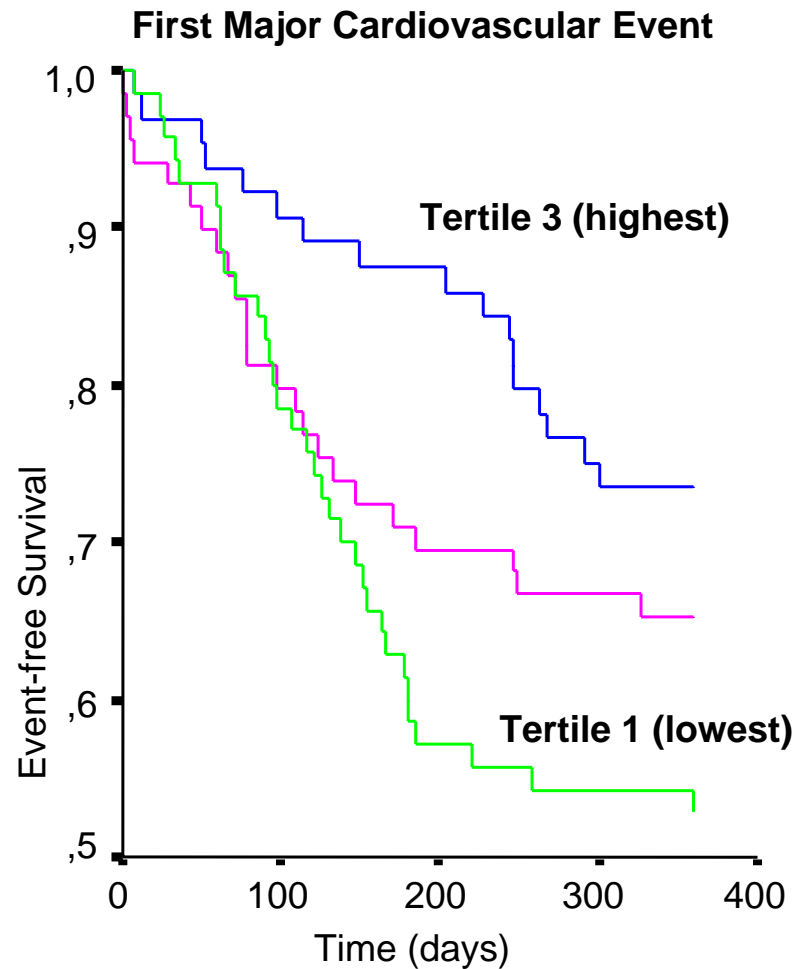
Figure 1 Online-Supplement



Outcome	P-value (log Rank)
Cardiovascular Death	0.035
First Major Cardiovascular Event	0.045
Revascularization	0.499
Hospitalization	0.044
Death from any Cause	0.196

**CD133+ Endothelial Progenitor Cells and Outcome.**

Figure 2 Online-Supplement



Outcome	P-value (log Rank)
Cardiovascular Death	0.514
First Major Cardiovascular Event	0.034
Revascularization	0.012
Hospitalization	0.014
Death from any Cause	0.852

**Number of Colony Forming Units – Endothelial Cells and Outcome.**

## Figure Legend Online-Supplement

**Figure 1 Online-Supplement.** Kaplan-Meier curves showing the occurrence of a first major cardiovascular event (myocardial infarction, hospitalization, revascularization, and cardiovascular death) ( $p=0.045$ ) at 12 months according to levels of circulating CD133<sup>+</sup> endothelial progenitor cells at the time of enrollment. The table shows the association between CD133<sup>+</sup> endothelial progenitor cell levels and the pre-specified endpoints.

**Figure 2 Online-Supplement.** Kaplan-Meier curves showing the occurrence of a first major cardiovascular event (myocardial infarction, hospitalization, revascularization, and cardiovascular death) ( $p=0.034$ ) at 12 months according to levels of colony forming units – endothelial cells at the time of enrollment in a subgroup of 203 patients. The table shows the association between numbers of colony forming units – endothelial cells and the pre-specified endpoints.