

# Supplementary Appendix

This appendix has been provided by the authors to give readers additional information about their work.

Supplement to: Richardson PG, Barlogie B, Berenson J, et al. A Phase 2 Study of Bortezomib in Relapsed, Refractory Myeloma. *N Engl J Med* 2003;348:2609-17.

**Supplementary Appendix 1. Improvement in Platelet Counts and Nonmyeloma Immunoglobulin Levels during the Study.\***

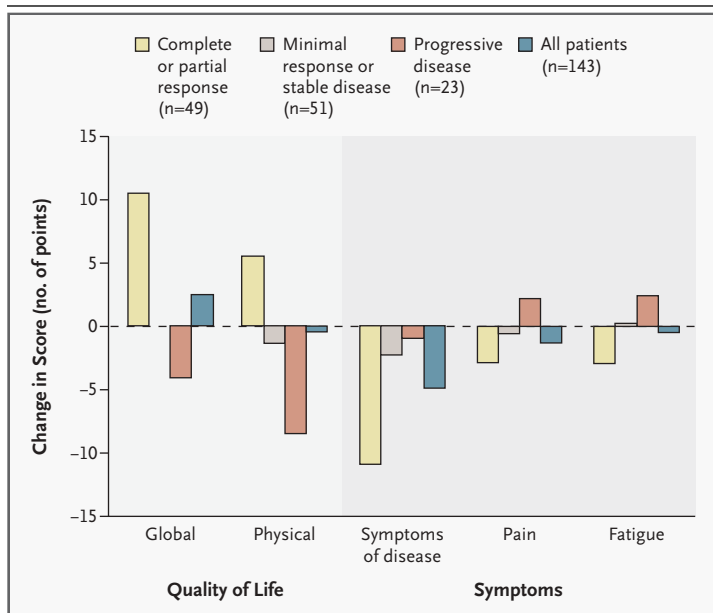
Variable	Base Line	End of Study
<b>All 202 patients</b>		
Mean platelet count (per mm <sup>3</sup> )	160,000	189,000
<b>53 Patients with a complete or partial response to bortezomib</b>		
Mean IgM level (g/liter)	0.30	0.60
Mean IgA level (g/liter)	0.34	0.46
Mean IgG level (g/liter)	4.68	6.20

\* Statistical testing for significance was not performed.

**Supplementary Appendix 2. Changes in Karnofsky Performance Score during the Study.\***

Category of Response to Bortezomib	Change in Karnofsky Performance Score				
	10-Point Increase	20-Point Increase	30-Point Increase	No Change	Decrease
	<i>no./total no. (%)</i>				
Complete or partial response	11/52 (21)	5/52 (10)	0	23/52 (44)	13/52 (25)
Minimal response or stable disease	11/59 (19)	1/59 (2)	0	26/59 (44)	21/59 (36)
Progressive disease	9/75 (12)	2/75 (3)	2/75 (3)	23/75 (31)	39/75 (52)

\* Data were available for 186 patients. Scores range from 0 to 100 (in increments of 10), with higher scores indicating better function.



**Supplementary Appendix 3. Mean Changes in Quality-of-Life Scores, According to Category of Response.**

The scores for the quality of life and pain are from the core quality-of-life questionnaire (QLQ-C30) of the European Organization for Research and Treatment of Cancer (EORTC), scores for symptoms of disease are from the EORTC multiple myeloma module (QLQ-MY24), and the fatigue scores are from the fatigue subscale of the Functional Assessment of Chronic Illness Therapy. For quality-of-life measures, a positive score indicates improvement; for measures of symptoms, a negative score indicates improvement. Scores for fatigue range from 0 to 52; all other scores range from 0 to 100. Twenty patients who could not be evaluated were excluded from the analysis.

**Supplementary Appendix 4. Subgroup Analysis of Response to Bortezomib Monotherapy.\***

Characteristic	Complete or Partial Response <i>no./total no. (%)</i>	P Value
Age		0.06
<65 yr	40/124 (32)	
≥65 yr	13/69 (19)	
Sex		0.74
Male	31/118 (26)	
Female	22/75 (29)	
Race		0.06
White	38/157 (24)	
Black	10/21 (48)	
Other	5/15 (33)	
Body-surface area		0.40
≤2 m <sup>2</sup>	31/123 (25)	
>2 m <sup>2</sup>	22/70 (31)	
Karnofsky performance score		0.52
≤70	12/34 (35)	
80	20/74 (27)	
≥90	20/80 (25)	
Type of myeloma		0.41
IgG	28/116 (24)	
IgA	15/47 (32)	
Light chain	9/27 (33)	
Bone marrow biopsy results		0.03
Plasma cells >50%	17/85 (20)	
Plasma cells ≤50%	33/93 (35)	
Cytogenetic abnormalities		0.05
Abnormal	11/57 (19)	
Normal	37/105 (35)	
Deletion of chromosome 13		0.81
Yes	6/25 (24)	
No	47/168 (28)	
Hemoglobin level		0.14
<10.5 g/dl	24/105 (23)	
≥10.5 g/dl	29/88 (33)	

\* P values were determined by a two-sided Fisher's exact test.