

## Supplementary Appendix

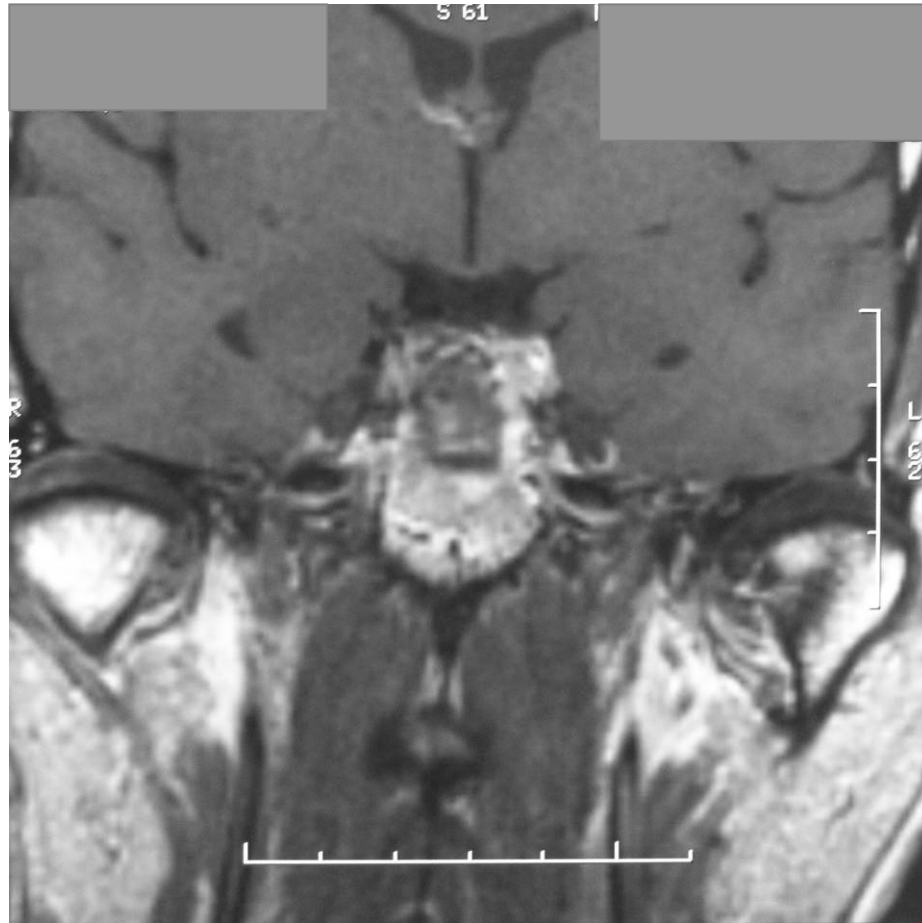
This appendix has been provided by the authors to give readers additional information about their work.

Supplement to: Newnham HH, Rivera-Woll LM. Hypogonadism due to pituicytoma in an identical twin. *N Engl J Med* 2008;359:2824.

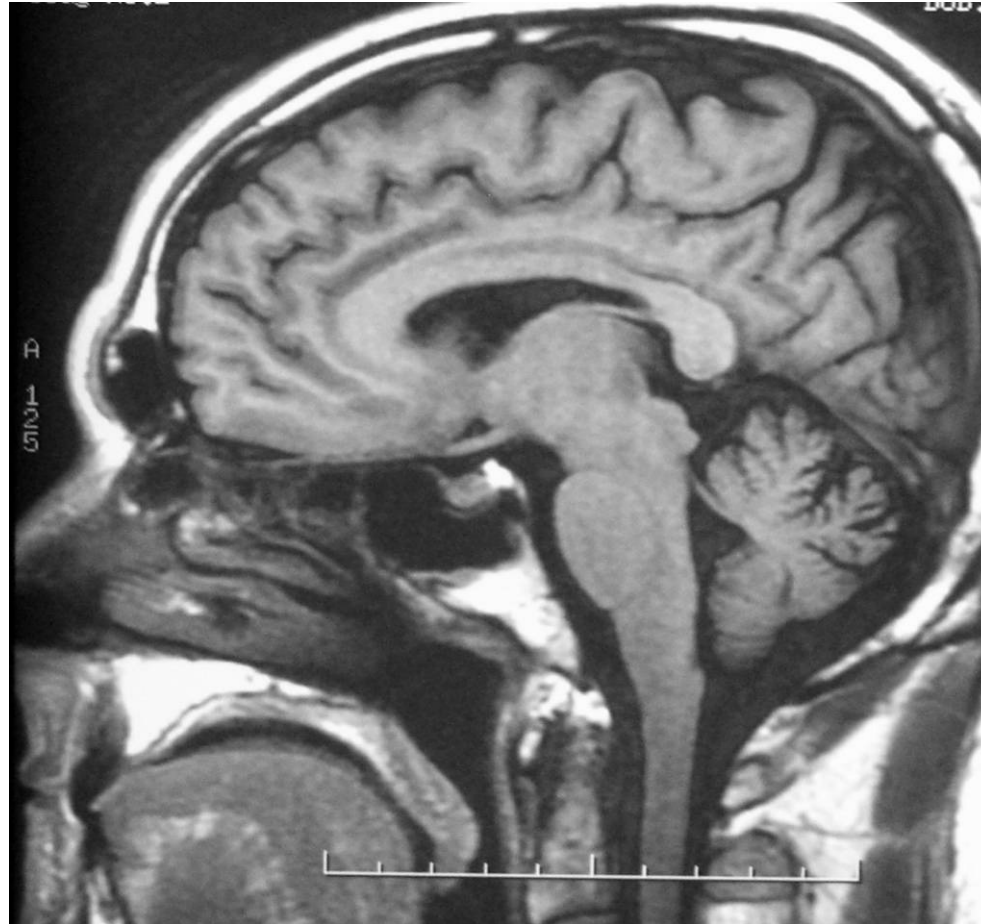
# Pituicytoma, normal twin MRI

H. Newnham & L. Rivera-Woll

NEJM Images in Clinical Medicine



Normal twin coronal MRI (corresponds to image B of affected twin)



Normal twin sagittal MRI (corresponds to image C of affected twin)