

Supplementary Appendix

This appendix has been provided by the authors to give readers additional information about their work.

Supplement to: Ryan ET, Felsenstein D, Aquino SL, Branda JA, Morgan JG. Case 39-2005: a 63-year-old woman with a positive serologic test for syphilis and persistent eosinophilia. *N Engl J Med* 2005;353:2697-705.

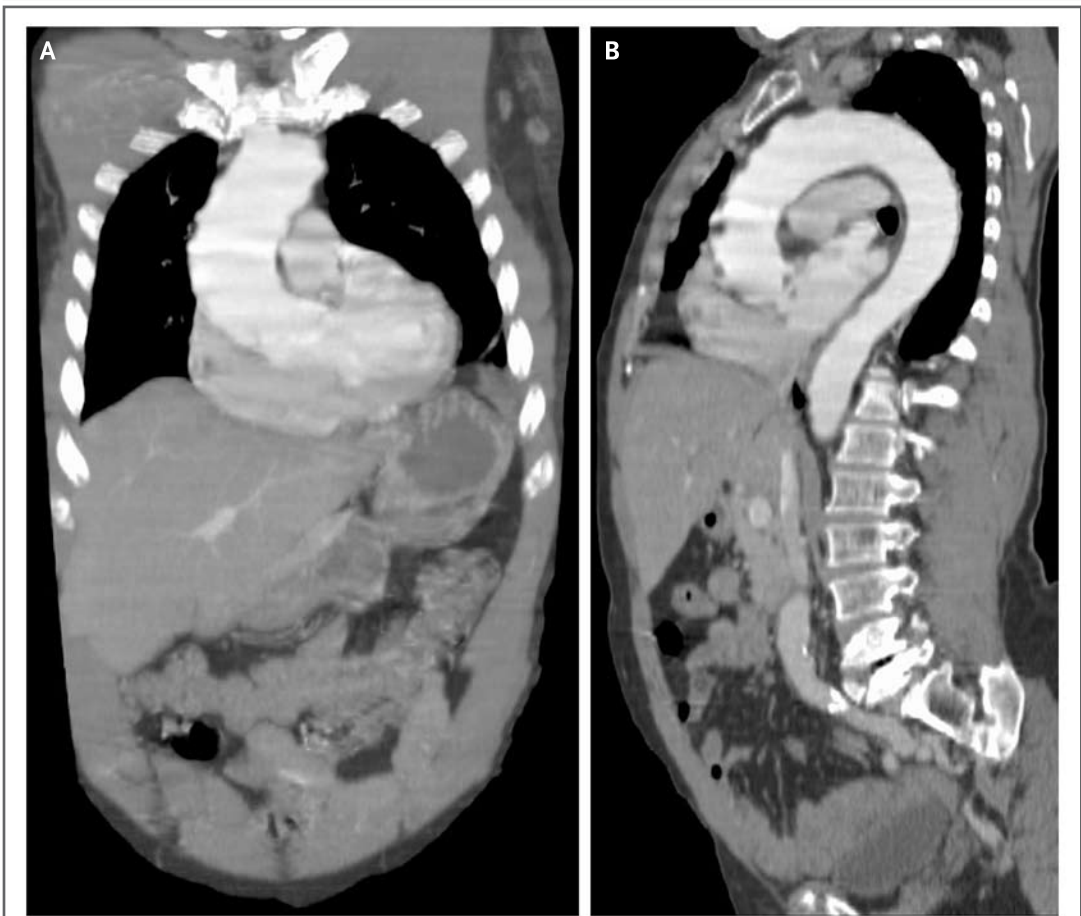


Figure 1. Multiplanar Coronal (Panel A) and Sagittal (Panel B) Reconstruction of CT Images Shows Diffuse Dilatation of the Ascending Aorta with No Focal Aneurysms.